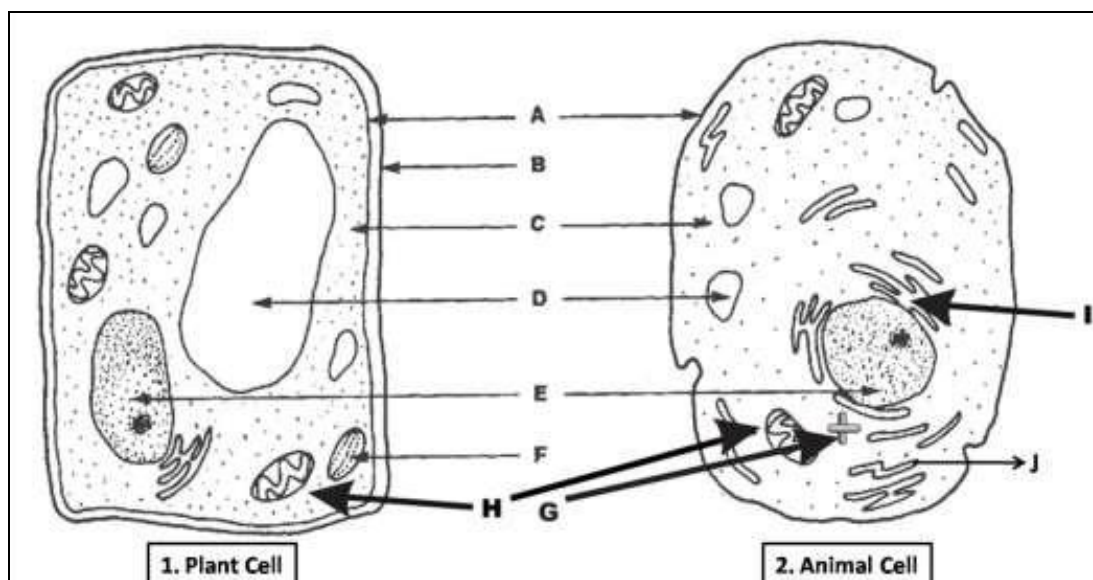


**SANGAM SKM COLLEGE - NADI**  
**YEAR 11 BIOLOGY**  
**WORKSHEET – WEEK 3**

**Question 1**

Label the parts of the cells A to J.

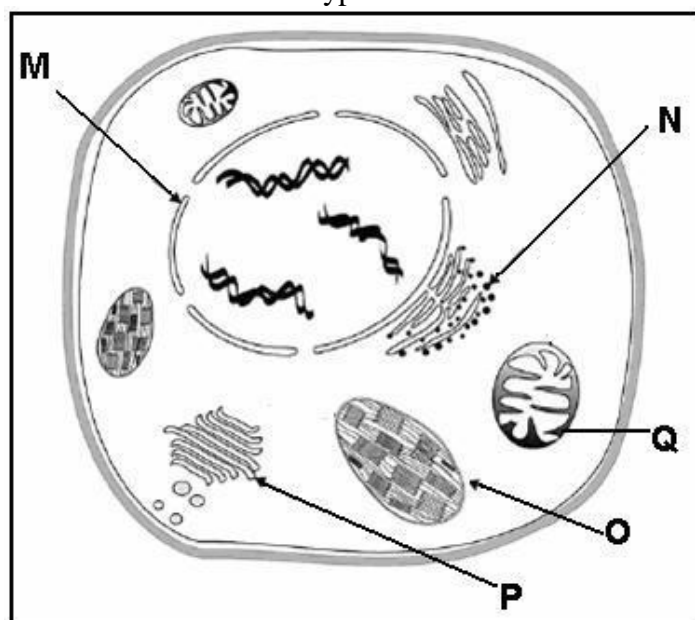


**Question 2**

State the differences between a plant and an animal cell?

**Question 3**

The diagram below shows the structures of a typical cell.



- Identify the cell above as an animal or a plant cell. Give a reason for your answer.
- Give **one** advantage of having large numbers of organelle Q in a muscle cell.
- Give a reason why a cell involved in active transport would contain a large number of organelle Q.

d) State the function of the part labelled N.

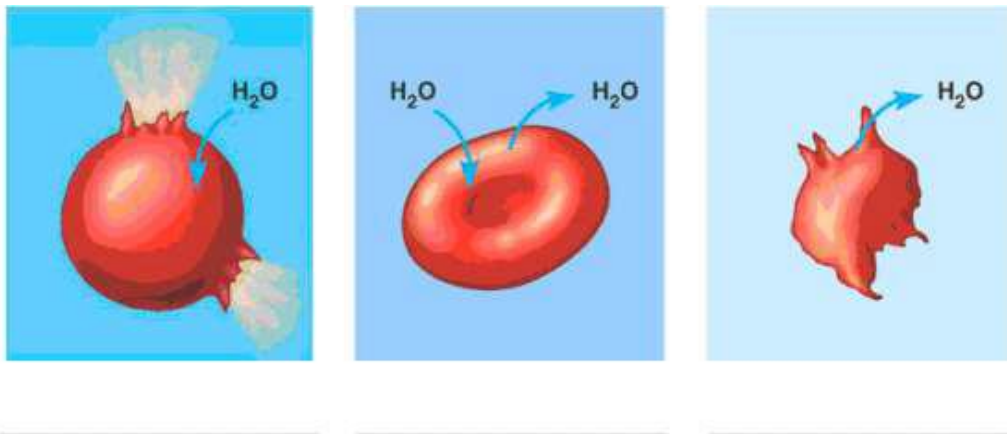
**Question 4**

Fill in the table given below by placing a (tick) in the appropriate column.

	Diffusion	Osmosis	Active Transport
A substance moves from an area of low concentration to an area of high concentration.			
Can happen in living cells.			
A substance moves and becomes more evenly spread out.			
The movement does not use energy and is caused by the random movement of individual particles.			
The movement requires energy from respiration.			
Only water is involved in this type of movement.			
Water moves from a less concentrated solution to a more concentrated solution.			

**Question 5**

Identify the solutions in which the cells were placed in as **isotonic, hypertonic or hypotonic solution**.



**Question 6**

Write an essay using 150 to 200 words on the following question.

**“Mitosis and meiosis are two types of cell division that occurs in plant and animal cells”.**

In your essay, briefly explain

- the process of mitosis and meiosis (2 marks)
- **two** major differences between mitosis and meiosis (4 marks)
- **two** ways in which meiosis leads to variation (4 marks)